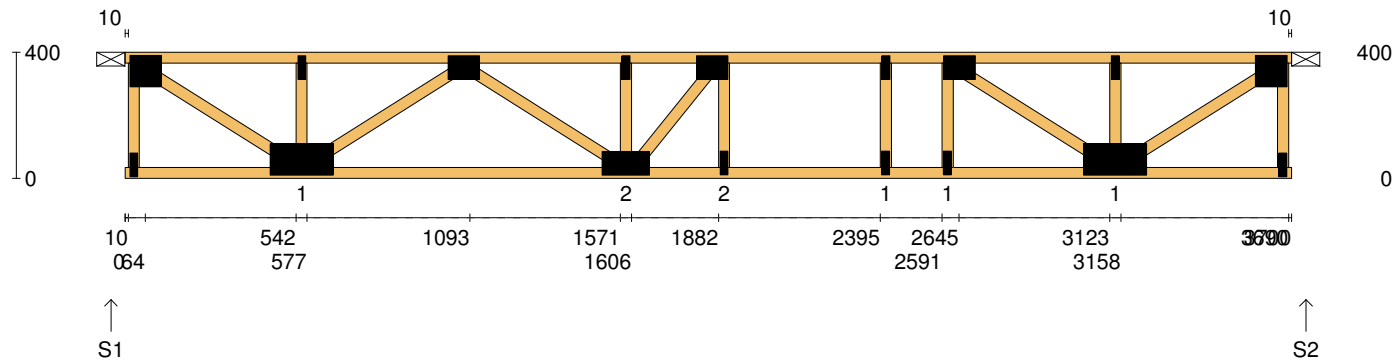


Client: <b>DEDICATED DEVELOPMENT PTY LTD</b>	<b>Trusstech SA Pty Ltd</b> 16 High St., Dry Creek, SA 5094	Job No: <b>TT02397</b>
Site: <b>638 BURBRIDGE RD</b> <b>WEST BEACH SA 5024 AUS</b>	Joist Name: FJ1 Type: SJ 400 Joists: FJ1, FJ2, FJ3	Weight: <b>22.84 kg</b>
Ref: <b>DWELLING 1</b>		Total Weight: <b>68.53 kg</b>
		Laminations: <b>1</b>



#### TIMBER / PLATES


Member	Size	Plating	Restraint
BC1	90x35-MGP10 H0 ADS	JD5	600
TC1	90x35-MGP10 H0 ADS	JD5	300
LEW1	90x35-MGP10 H0 ADS	JD5	
W1	90x35-MGP10 H0 ADS	JD5	
W2	90x35-MGP10 H0 ADS	JD5	
W3	90x35-MGP10 H0 ADS	JD5	
W4	90x35-MGP10 H0 ADS	JD5	
W5	90x35-MGP10 H0 ADS	JD5	
W6	90x35-MGP10 H0 ADS	JD5	
W7	90x35-MGP10 H0 ADS	JD5	
W8	90x35-MGP10 H0 ADS	JD5	
W9	90x35-MGP10 H0 ADS	JD5	
W10	90x35-MGP10 H0 ADS	JD5	

- 3 more members were not shown -

#### Vertical Reactions at Supports

	S1	S2
1.35DL (kN)	0.61	0.61
1.2DL + 1.5LL (kN)	3.00	3.00

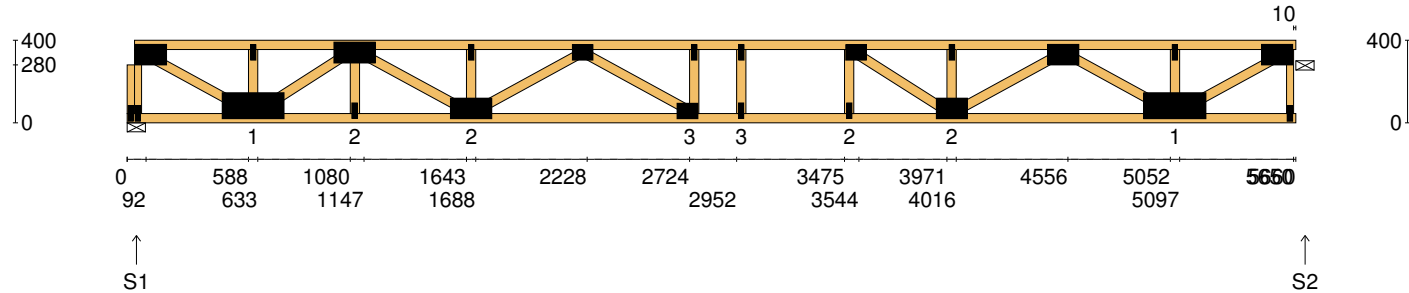
Joint	Nail Plate	Joint	Nail Plate
T1	100x100-MN	B6	100x200-MN
BL1	25x75-MN	T8	25x75-MN
B1	100x200-MN	BR1	25x75-MN
T2	25x75-MN	T9	100x100-MN
T3	75x100-MN		
B2	75x150-MN		
T4	25x75-MN		
T5	75x100-MN		
B3	25x75-MN		
T6	25x75-MN		
B4	25x75-MN		
T7	75x100-MN		
B5	25x75-MN		

Span: <b>3700</b>	Floor Material: <b>Particle (15.4 kg/m²)</b>	Application: <b>General Areas</b>	All dimensions in millimetres. This drawing should be read in conjunction with Multinail Technical sheets. Wall plates must be placed at supports only.	<b>016020</b> (TN-016-020)
Overhang: <b>0/0</b>	Floor Covering: <b>Std Carpet + Underlay (8 kg/m²)</b>	Live Load: <b>1.5 kPa</b>		Ver: <b>Floor 1.9.4</b>
Spacing: <b>600</b>	Ceiling Material: <b>Plaster 10mm Supa Span (8.2 kg/m²)</b>	Point Load: <b>1.8 kN</b>		Date: <b>12/02/2019</b>
Quantity: <b>3</b>	Ceiling Fixing: <b>Metal direct @ 600c</b>	Design: <b>AS 1720.1-2010</b>		Page: <b>1 of 28</b>





Client: <b>DEDICATED DEVELOPMENT PTY LTD</b>	<b>Trusstech SA Pty Ltd</b> 16 High St., Dry Creek, SA 5094	Job No: <b>TT02397</b>
Site: <b>638 BURBRIDGE RD</b> <b>WEST BEACH SA 5024 AUS</b>		Weight: <b>43.14 kg</b>
Ref: <b>DWELLING 1</b>	Joist Name: FJ4 Type: SJ 400 Joists: FJ6, FJ7, FJ9, FJ10, FJ11, FJ12, FJ25	Total Weight: <b>301.98 kg</b>
		Laminations: <b>1</b>



#### TIMBER / PLATES


Member	Size	Plating	Restraint
BC1	90x45-MGP10 H0 ADS	JD5	600
LBlock1	90x35-MGP10 H0 ADS	JD5	
LEW1	90x35-MGP10 H0 ADS	JD5	
TC1	90x45-MGP10 H0 ADS	JD5	300
W1	90x45-MGP10 H0 ADS	JD5	
W2	90x45-MGP10 H0 ADS	JD5	
W3	90x45-MGP10 H0 ADS	JD5	
W4	90x45-MGP10 H0 ADS	JD5	
W5	90x45-MGP10 H0 ADS	JD5	
W6	90x45-MGP10 H0 ADS	JD5	
W7	90x45-MGP10 H0 ADS	JD5	
W8	90x45-MGP10 H0 ADS	JD5	
W9	90x45-MGP10 H0 ADS	JD5	

- 9 more members were not shown -

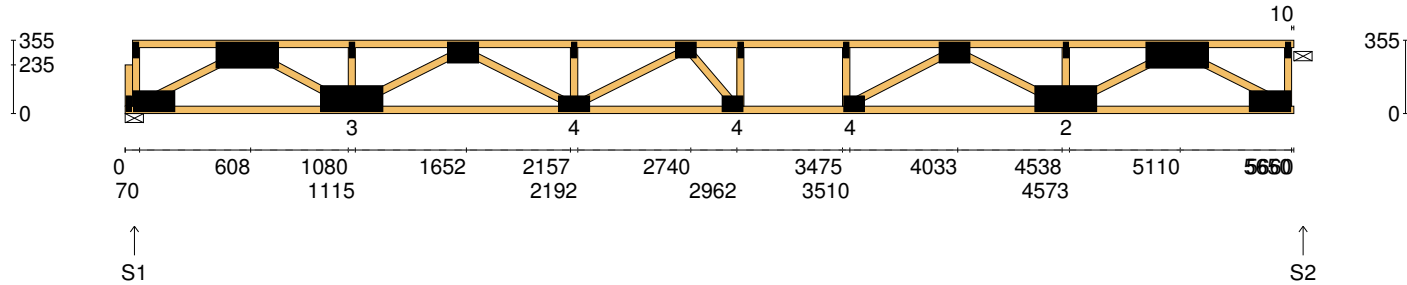
#### Vertical Reactions at Supports

	S1	S2
1.35DL (kN)	0.99	0.98
1.2DL + 1.5LL (kN)	4.64	4.63

Joint	Nail Plate	Joint	Nail Plate
BL1-1	25x75-MN	B5	25x75-MN
T1	100x150-MN	T8	75x100-MN
BL1	25x75-MN	B6	25x75-MN
B1	125x300-MN	B7	100x150-MN
T2	25x75-MN	T9	25x75-MN
T3	100x200-MN	T10	100x150-MN
B2	25x75-MN	B8	125x300-MN
B3	100x200-MN	T11	25x75-MN
T4	25x75-MN	BR1	25x75-MN
T5	75x100-MN	T12	100x150-MN
B4	75x100-MN		
T6	25x75-MN		
T7	25x75-MN		

Span: <b>5660</b>	Floor Material: <b>Particle (15.4 kg/m²)</b>	Application: <b>General Areas</b>	All dimensions in millimetres. This drawing should be read in conjunction with Multinail Technical sheets. Wall plates must be placed at supports only.	<b>016020</b> (TN-016-020)
Overhang: <b>0/0</b>	Floor Covering: <b>Std Carpet + Underlay (8 kg/m²)</b>	Live Load: <b>1.5 kPa</b>		Ver: <b>Floor 1.9.4</b>
Spacing: <b>600</b>	Ceiling Material: <b>Plaster 10mm Supa Span (8.2 kg/m²)</b>	Point Load: <b>1.8 kN</b>		Date: <b>12/02/2019</b>
Quantity: <b>7</b>	Ceiling Fixing: <b>Metal direct @ 600c</b>	Design: <b>AS 1720.1-2010</b>		Page: <b>4 of 28</b>

Client: <b>DEDICATED DEVELOPMENT PTY LTD</b>	<b>Trusstech SA Pty Ltd</b> 16 High St., Dry Creek, SA 5094	Job No: <b>TT02397</b>
Site: <b>638 BURBRIDGE RD</b> <b>WEST BEACH SA 5024 AUS</b>		Weight: <b>36.23 kg</b>
Ref: <b>DWELLING 1</b>	Joist Name: FJ5 Type: SJ 355 Joists: FJ13	Total Weight: <b>36.23 kg</b>
		Laminations: <b>1</b>



#### TIMBER / PLATES


Member	Size	Plating	Restraint
BC1	90x35-HC H0 MAN	JD5	600
LBlock1	90x35-MGP10 H0 ADS	JD5	
LEW1	90x35-MGP10 H0 ADS	JD5	
TC1	90x35-MGP10 H0 ADS	JD5	300
W1	90x35-MGP10 H0 ADS	JD5	
W2	90x35-MGP10 H0 ADS	JD5	
W3	90x35-MGP10 H0 ADS	JD5	
W4	90x35-MGP10 H0 ADS	JD5	
W5	90x35-MGP10 H0 ADS	JD5	
W6	90x35-MGP10 H0 ADS	JD5	
W7	90x35-MGP10 H0 ADS	JD5	
W8	90x35-MGP10 H0 ADS	JD5	
W9	90x35-MGP10 H0 ADS	JD5	

- 7 more members were not shown -

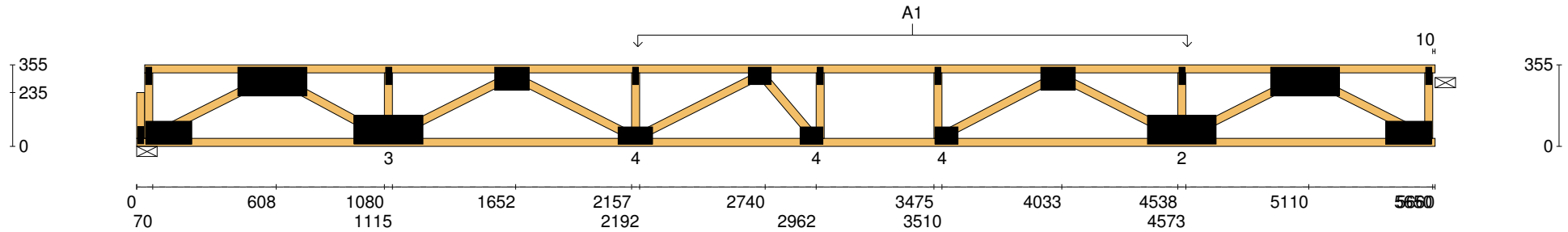
#### Vertical Reactions at Supports


	S1	S2
1.35DL (kN)	1.07	1.13
1.2DL + 1.5LL (kN)	4.71	4.77

Joint	Nail Plate	Joint	Nail Plate
B1-1	25x75-MN	T7	25x75-MN
B1	100x200-MN	T8	100x150-MN
TL1	25x75-MN	B6	125x300-MN
T1	125x300-MN	T9	25x75-MN
B2	125x300-MN	T10	125x300-MN
T2	25x75-MN	TR1	25x75-MN
T3	100x150-MN	B7	100x200-MN
B3	75x150-MN		
T4	25x75-MN		
T5	75x100-MN		
B4	75x100-MN		
T6	25x75-MN		
B5	75x100-MN		

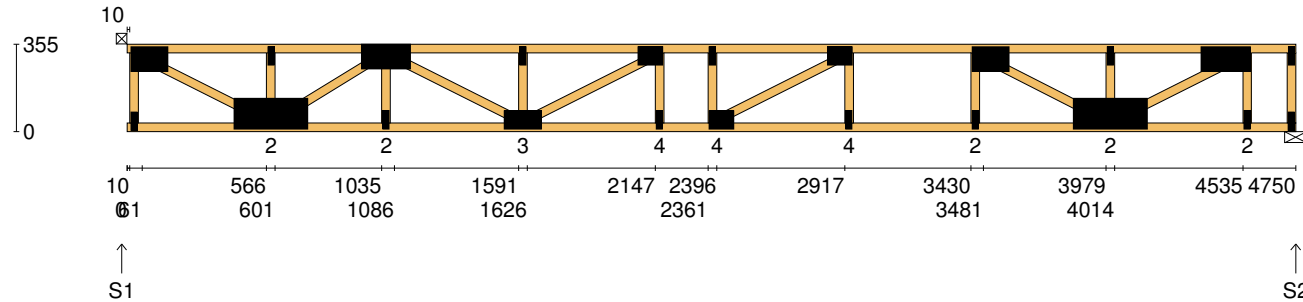
Span: <b>5660</b>	Floor Material: <b>Particle (15.4 kg/m²)</b>	Application: <b>General Areas</b>	All dimensions in millimetres. This drawing should be read in conjunction with Multinail Technical sheets. Wall plates must be placed at supports only.	<b>016020</b> (TN-016-020)
Overhang: <b>0/0</b>	Floor Covering: <b>Std Carpet + Underlay (8 kg/m²)</b>	Live Load: <b>1.5 kPa</b>		Ver: <b>Floor 1.9.4</b>
Spacing: <b>600</b>	Ceiling Material: <b>Plaster 10mm Supa Span (8.2 kg/m²)</b>	Point Load: <b>1.8 kN</b>		Date: <b>12/02/2019</b>
Quantity: <b>1</b>	Ceiling Fixing: <b>Metal direct @ 600c</b>	Design: <b>AS 1720.1-2010</b>		Page: <b>5 of 28</b>

Client: <b>DEDICATED DEVELOPMENT PTY LTD</b>	<b>Trusstech SA Pty Ltd</b> 16 High St., Dry Creek, SA 5094	Job No: <b>TT02397</b>
Site: <b>638 BURBRIDGE RD</b> <b>WEST BEACH SA 5024 AUS</b>		Weight: <b>36.23 kg</b>
Ref: <b>DWELLING 1</b>	Joist Name: FJ5 Type: SJ 355 Joists: FJ13	Total Weight: <b>36.23 kg</b>
		Laminations: <b>1</b>



<b>User Def. Load</b>		A1 43.50 kg/m² WET AREA						
<b>Applied Load</b> DL (kN) LL (kN) WL Up (kN) WL Dn (kN)								
Span:	5660	Floor Material:	Particle (15.4 kg/m²)	Application:	General Areas	All dimensions in millimetres. This drawing should be read in conjunction with Multinail Technical sheets. Wall plates must be placed at supports only.	016020 (TN-016-020)	
Overhang:	0/0	Floor Covering:	Std Carpet + Underlay (8 kg/m²)	Live Load:	1.5 kPa		Ver:	Floor 1.9.4
Spacing:	600	Ceiling Material:	Plaster 10mm Supa Span (8.2 kg/m²)	Point Load:	1.8 kN		Date:	12/02/2019
Quantity:	1	Ceiling Fixing:	Metal direct @ 600c	Design:	AS 1720.1-2010		Page:	6 of 28

Client: <b>DEDICATED DEVELOPMENT PTY LTD</b>	<b>Trusstech SA Pty Ltd</b> 16 High St., Dry Creek, SA 5094	Job No: <b>TT02397</b>
Site: <b>638 BURBRIDGE RD</b> <b>WEST BEACH SA 5024 AUS</b>		Weight: <b>32.54 kg</b>
Ref: <b>DWELLING 1</b>	Joist Name: FJ6 Type: SJ 355 Joists: FJ14, FJ15, FJ16	Total Weight: <b>97.61 kg</b>
		Laminations: <b>1</b>



#### TIMBER / PLATES


Member	Size	Plating	Restraint
BC1	90x35-HC H0 MAN	JD5	600
TC1	90x35-HC H0 MAN	JD5	300
LEW1	90x35-MGP10 H0 ADS	JD5	
W1	90x35-MGP10 H0 ADS	JD5	
W2	90x35-MGP10 H0 ADS	JD5	
W3	90x35-MGP10 H0 ADS	JD5	
W4	90x35-MGP10 H0 ADS	JD5	
W5	90x35-MGP10 H0 ADS	JD5	
W6	90x35-MGP10 H0 ADS	JD5	
W7	90x35-MGP10 H0 ADS	JD5	
W8	90x35-MGP10 H0 ADS	JD5	
W9	90x35-MGP10 H0 ADS	JD5	
W10	90x35-MGP10 H0 ADS	JD5	

- 7 more members were not shown -

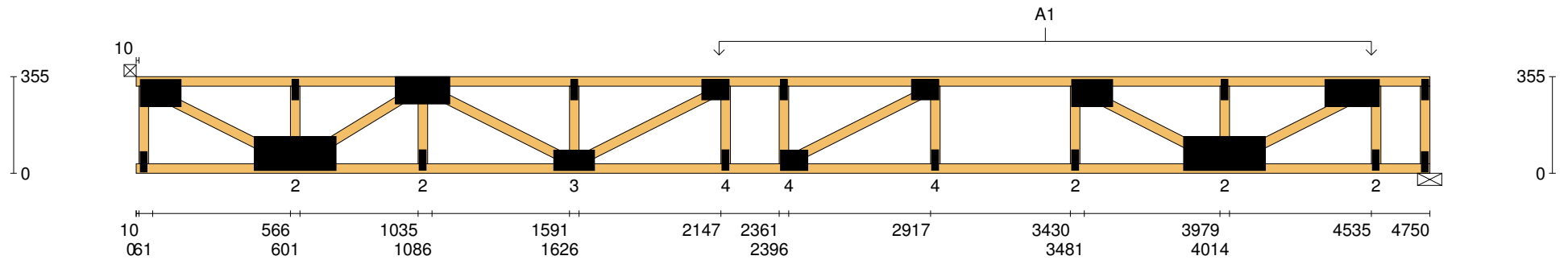
#### Vertical Reactions at Supports

	S1	S2
1.35DL (kN)	0.89	1.04
1.2DL + 1.5LL (kN)	3.97	4.10

Joint	Nail Plate	Joint	Nail Plate
T1	100x150-MN	B6	25x75-MN
BL1	25x75-MN	T8	100x150-MN
B1	125x300-MN	B7	25x75-MN
T2	25x75-MN	B8	125x300-MN
T3	100x200-MN	T9	25x75-MN
B2	25x75-MN	T10	100x200-MN
B3	75x150-MN	B9	25x75-MN
T4	25x75-MN	TR1	25x75-MN
T5	75x100-MN	BR2	25x75-MN
B4	25x75-MN		
B5	75x100-MN		
T6	25x75-MN		
T7	75x100-MN		


Span: <b>4750</b>	Floor Material: <b>Particle (15.4 kg/m²)</b>	Application: <b>General Areas</b>	All dimensions in millimetres. This drawing should be read in conjunction with Multinail Technical sheets. Wall plates must be placed at supports only.	<b>016020</b> (TN-016-020)
Overhang: <b>0/0</b>	Floor Covering: <b>Std Carpet + Underlay (8 kg/m²)</b>	Live Load: <b>1.5 kPa</b>		Ver: <b>Floor 1.9.4</b>
Spacing: <b>600</b>	Ceiling Material: <b>Plaster 10mm Supa Span (8.2 kg/m²)</b>	Point Load: <b>1.8 kN</b>		Date: <b>12/02/2019</b>
Quantity: <b>3</b>	Ceiling Fixing: <b>Metal direct @ 600c</b>	Design: <b>AS 1720.1-2010</b>		Page: <b>7 of 28</b>

Client: <b>DEDICATED DEVELOPMENT PTY LTD</b>	<b>Trusstech SA Pty Ltd</b> 16 High St., Dry Creek, SA 5094  Joist Name: FJ6    Type: SJ 355 Joists: FJ14, FJ15, FJ16	Job No: <b>TT02397</b>
Site: <b>638 BURBRIDGE RD</b> <b>WEST BEACH SA 5024 AUS</b>		Weight: <b>32.54 kg</b>
Ref: <b>DWELLING 1</b>		Total Weight: <b>97.61 kg</b> Laminations: <b>1</b>



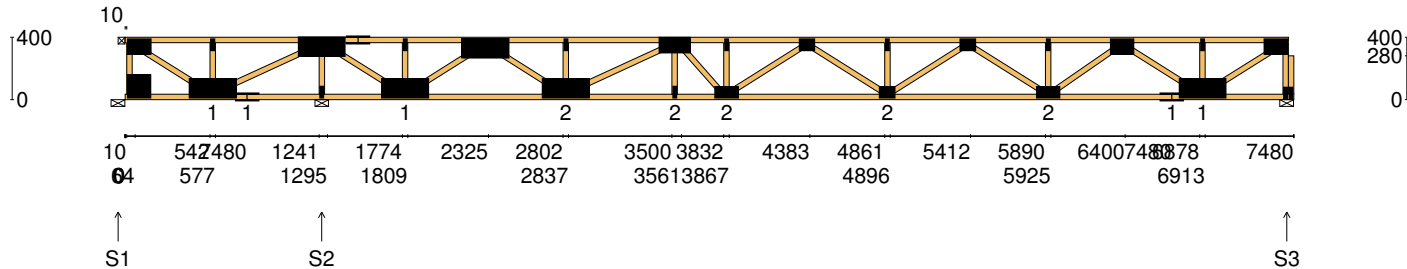
<b>User Def. Load</b>	A1 43.50 kg/m <sup>2</sup> WET AREA
-----------------------	---

<b>Applied Load</b>	
DL (kN)	
LL (kN)	
WL Up (kN)	
WL Dn (kN)	

Span: <b>4750</b>	Floor Material: <b>Particle (15.4 kg/m<sup>2</sup>)</b>	Application: <b>General Areas</b>	All dimensions in millimetres. This drawing should be read in conjunction with Multinail Technical sheets. Wall plates must be placed at supports only.	<b>016020</b> (TN-016-020)
Overhang: <b>0/0</b>	Floor Covering: <b>Std Carpet + Underlay (8 kg/m<sup>2</sup>)</b>	Live Load: <b>1.5 kPa</b>		Ver: <b>Floor 1.9.4</b>
Spacing: <b>600</b>	Ceiling Material: <b>Plaster 10mm Supa Span (8.2 kg/m<sup>2</sup>)</b>	Point Load: <b>1.8 kN</b>		Date: <b>12/02/2019</b>
Quantity: <b>3</b>	Ceiling Fixing: <b>Metal direct @ 600c</b>	Design: <b>AS 1720.1-2010</b>		Page: <b>8 of 28</b>



Client: <b>DEDICATED DEVELOPMENT PTY LTD</b>	<b>Trusstech SA Pty Ltd</b> 16 High St., Dry Creek, SA 5094	Job No: <b>TT02397</b>
Site: <b>638 BURBRIDGE RD</b> <b>WEST BEACH SA 5024 AUS</b>		Weight: <b>49.51 kg</b>
Ref: <b>DWELLING 1</b>	Joist Name: FJ7 Type: SJ 400 Joists: FJ17	Total Weight: <b>49.51 kg</b>
		Laminations: <b>1</b>



#### TIMBER / PLATES

Member	Size	Plating	Restraint
BC1	90x35-MGP10 H0 ADS	JD5	600
TC1	90x35-MGP10 H0 ADS	JD5	300
LEW1	90x35-MGP10 H0 ADS	JD5	
W1	90x35-MGP10 H0 ADS	JD5	
W2	90x35-MGP10 H0 ADS	JD5	
W3	90x35-MGP10 H0 ADS	JD5	
BC2	90x35-MGP10 H0 ADS	JD5	600
W4	90x35-MGP10 H0 ADS	JD5	
W5	90x35-MGP10 H0 ADS	JD5	
TC2	90x35-MGP10 H0 ADS	JD5	300
W6	90x35-MGP10 H0 ADS	JD5	
W7	90x35-MGP10 H0 ADS	JD5	
W8	90x35-MGP10 H0 ADS	JD5	


- 18 more members were not shown -

#### Vertical Reactions at Supports

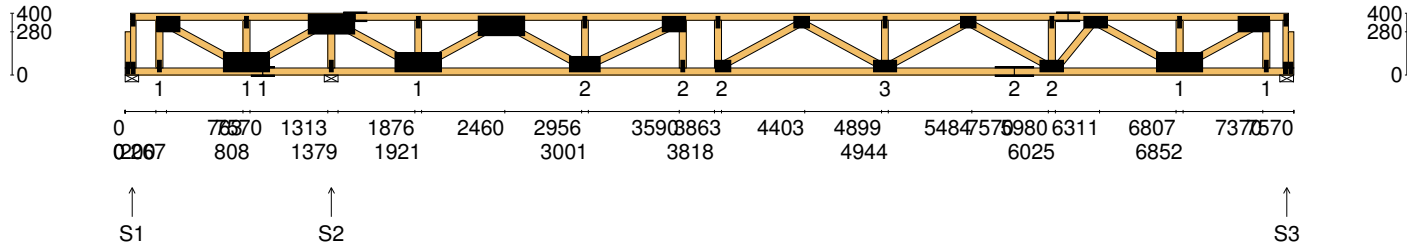
	S1	S2	S3
1.35DL (kN)	-0.71	2.32	0.84
1.2DL + 1.5LL (kN)	-3.55	11.55	4.16

Joint	Nail Plate	Joint	Nail Plate
T1	100x150-MN	T8	100x200-MN
BL1	150x150-MN	B6	25x75-MN
B1	125x300-MN	B7	75x150-MN
T2	25x75-MN	T9	25x75-MN
B2	75x150-MN	T10	75x100-MN
T3	125x300-MN	B8	75x100-MN
B3	25x75-MN	T11	25x75-MN
T4	75x150-MN	T12	75x100-MN
B4	125x300-MN	B9	75x150-MN
T5	25x75-MN	T13	25x75-MN
T6	125x300-MN	T14	100x150-MN
B5	125x300-MN	B10	75x150-MN
T7	25x75-MN	BR1-1	25x75-MN

- 4 more nail plates were not shown -

Span: <b>7480</b>	Floor Material: <b>Particle (15.4 kg/m<sup>2</sup>)</b>	Application: <b>General Areas</b>	All dimensions in millimetres. This drawing should be read in conjunction with Multinail Technical sheets. Wall plates must be placed at supports only.	<b>016020</b> (TN-016-020)
Overhang: <b>0/0</b>	Floor Covering: <b>Std Carpet + Underlay (8 kg/m<sup>2</sup>)</b>	Live Load: <b>1.5 kPa</b>		Ver: <b>Floor 1.9.4</b>
Spacing: <b>600</b>	Ceiling Material: <b>Plaster 10mm Supa Span (8.2 kg/m<sup>2</sup>)</b>	Point Load: <b>1.8 kN</b>		Date: <b>12/02/2019</b>
Quantity: <b>1</b>	Ceiling Fixing: <b>Metal direct @ 600c</b>	Design: <b>AS 1720.1-2010</b>		Page: <b>9 of 28</b>

Client: <b>DEDICATED DEVELOPMENT PTY LTD</b>	<b>Trusstech SA Pty Ltd</b> 16 High St., Dry Creek, SA 5094	Job No: <b>TT02397</b>
Site: <b>638 BURBRIDGE RD</b> <b>WEST BEACH SA 5024 AUS</b>		Weight: <b>60.73 kg</b>
Ref: <b>DWELLING 1</b>	Joist Name: FJ8 Type: SJ 400 Joists: FJ18, FJ19	Total Weight: <b>121.46 kg</b>
		Laminations: <b>1</b>



#### TIMBER / PLATES

Member	Size	Plating	Restraint
BC1	90x45-MGP10 H0 ADS	JD5	600
LBlock1	90x35-MGP10 H0 ADS	JD5	
LEW1	90x35-MGP10 H0 ADS	JD5	
TC1	90x45-MGP10 H0 ADS	JD5	300
W1	90x45-MGP10 H0 ADS	JD5	
W2	90x45-MGP10 H0 ADS	JD5	
W3	90x45-MGP10 H0 ADS	JD5	
W4	90x45-MGP10 H0 ADS	JD5	
BC2	90x45-MGP10 H0 ADS	JD5	600
W5	90x45-MGP10 H0 ADS	JD5	
W6	90x45-MGP10 H0 ADS	JD5	
TC2	90x45-MGP10 H0 ADS	JD5	300
W7	90x45-MGP10 H0 ADS	JD5	


- 21 more members were not shown -

#### Vertical Reactions at Supports

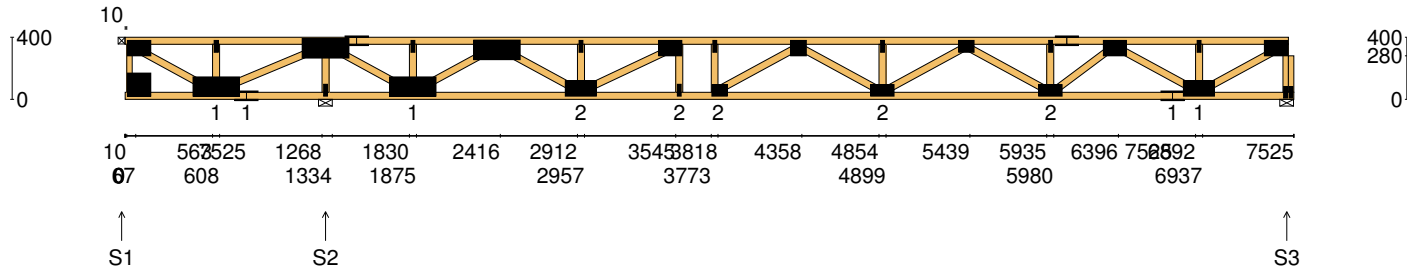
	S1	S2	S3
1.35DL (kN)	-0.56	2.27	0.93
1.2DL + 1.5LL (kN)	-2.73	10.80	4.36

Joint	Nail Plate	Joint	Nail Plate
BL2-1	25x75-MN	T6	125x300-MN
TL1	25x75-MN	B6	100x200-MN
BL2	25x75-MN	T7	25x75-MN
T1	100x150-MN	T8	100x150-MN
B1	25x75-MN	B7	25x75-MN
B2	125x300-MN	B8	75x100-MN
T2	25x75-MN	T9	25x75-MN
B3	75x150-MN	T10	75x100-MN
T3	125x300-MN	B9	75x150-MN
B4	25x75-MN	T11	25x75-MN
T4	75x150-MN	T12	75x100-MN
B5	125x300-MN	B10	75x250-MN
T5	25x75-MN	BR2-1	25x75-MN

- 10 more nail plates were not shown -

Span: <b>7570</b>	Floor Material: <b>Particle (15.4 kg/m²)</b>	Application: <b>General Areas</b>	All dimensions in millimetres. This drawing should be read in conjunction with Multinail Technical sheets. Wall plates must be placed at supports only.	<b>016020</b> (TN-016-020)
Overhang: <b>0/0</b>	Floor Covering: <b>Std Carpet + Underlay (8 kg/m²)</b>	Live Load: <b>1.5 kPa</b>		Ver: <b>Floor 1.9.4</b>
Spacing: <b>600</b>	Ceiling Material: <b>Plaster 10mm Supa Span (8.2 kg/m²)</b>	Point Load: <b>1.8 kN</b>		Date: <b>12/02/2019</b>
Quantity: <b>2</b>	Ceiling Fixing: <b>Metal direct @ 600c</b>	Design: <b>AS 1720.1-2010</b>		Page: <b>10 of 28</b>

Client: <b>DEDICATED DEVELOPMENT PTY LTD</b>	<b>Trusstech SA Pty Ltd</b> 16 High St., Dry Creek, SA 5094	Job No: <b>TT02397</b>
Site: <b>638 BURBRIDGE RD</b> <b>WEST BEACH SA 5024 AUS</b>		Weight: <b>59.24 kg</b>
Ref: <b>DWELLING 1</b>	Joist Name: FJ9 Type: SJ 400 Joists: FJ20, FJ21, FJ22	Total Weight: <b>177.72 kg</b>
		Laminations: <b>1</b>



#### TIMBER / PLATES

Member	Size	Plating	Restraint
BC1	90x45-MGP10 H0 ADS	JD5	600
TC1	90x45-MGP10 H0 ADS	JD5	300
LEW1	90x35-MGP10 H0 ADS	JD5	
W1	90x45-MGP10 H0 ADS	JD5	
W2	90x45-MGP10 H0 ADS	JD5	
W3	90x45-MGP10 H0 ADS	JD5	
BC2	90x45-MGP10 H0 ADS	JD5	600
W4	90x45-MGP10 H0 ADS	JD5	
W5	90x45-MGP10 H0 ADS	JD5	
TC2	90x45-MGP10 H0 ADS	JD5	300
W6	90x45-MGP10 H0 ADS	JD5	
W7	90x45-MGP10 H0 ADS	JD5	
W8	90x45-MGP10 H0 ADS	JD5	


- 18 more members were not shown -

#### Vertical Reactions at Supports

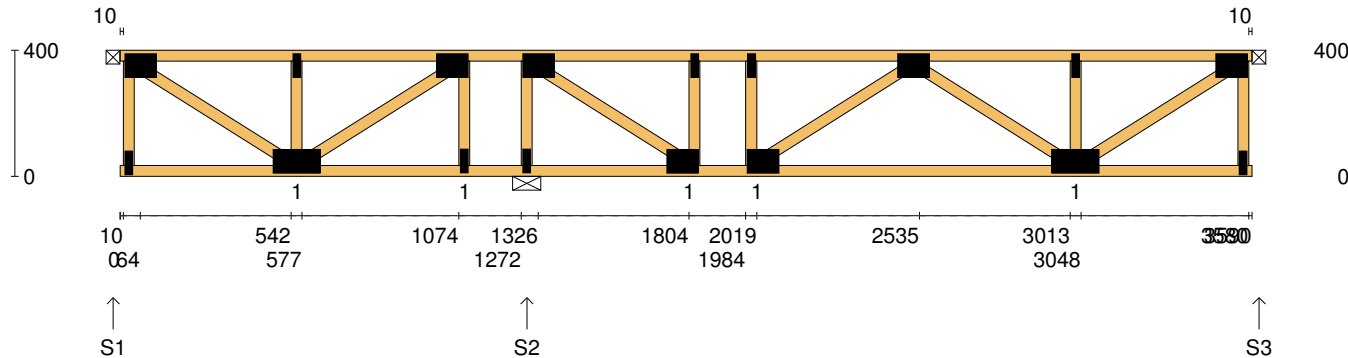
	S1	S2	S3
1.35DL (kN)	-0.70	2.41	0.90
1.2DL + 1.5LL (kN)	-3.35	11.48	4.24

Joint	Nail Plate	Joint	Nail Plate
T1	100x150-MN	T8	100x150-MN
BL1	150x150-MN	B6	25x75-MN
B1	125x300-MN	B7	75x100-MN
T2	25x75-MN	T9	25x75-MN
B2	75x150-MN	T10	100x100-MN
T3	125x300-MN	B8	75x150-MN
B3	25x75-MN	T11	25x75-MN
T4	75x150-MN	T12	75x100-MN
B4	125x300-MN	B9	75x150-MN
T5	25x75-MN	T13	25x75-MN
T6	125x300-MN	T14	75x150-MN
B5	100x200-MN	T15	100x150-MN
T7	25x75-MN	BR1-1	25x75-MN

- 5 more nail plates were not shown -

Span: <b>7525</b>	Floor Material: <b>Particle (15.4 kg/m<sup>2</sup>)</b>	Application: <b>General Areas</b>	All dimensions in millimetres. This drawing should be read in conjunction with Multinail Technical sheets. Wall plates must be placed at supports only.	<b>016020</b> (TN-016-020)
Overhang: <b>0/0</b>	Floor Covering: <b>Std Carpet + Underlay (8 kg/m<sup>2</sup>)</b>	Live Load: <b>1.5 kPa</b>		Ver: <b>Floor 1.9.4</b>
Spacing: <b>600</b>	Ceiling Material: <b>Plaster 10mm Supa Span (8.2 kg/m<sup>2</sup>)</b>	Point Load: <b>1.8 kN</b>		Date: <b>12/02/2019</b>
Quantity: <b>3</b>	Ceiling Fixing: <b>Metal direct @ 600c</b>	Design: <b>AS 1720.1-2010</b>		Page: <b>11 of 28</b>

Client: <b>DEDICATED DEVELOPMENT PTY LTD</b>	<b>Trusstech SA Pty Ltd</b> 16 High St., Dry Creek, SA 5094	Job No: <b>TT02397</b>
Site: <b>638 BURBRIDGE RD</b> <b>WEST BEACH SA 5024 AUS</b>	Joist Name: FJ10 Type: SJ 400	Weight: <b>22.46 kg</b>
Ref: <b>DWELLING 1</b>	Joists: FJ23, FJ24, FJ41	Total Weight: <b>67.37 kg</b>
		Laminations: <b>1</b>



#### TIMBER / PLATES


Member	Size	Plating	Restraint
BC1	90x35-MGP10 H0 ADS	JD5	600
TC1	90x35-MGP10 H0 ADS	JD5	300
LEW1	90x35-MGP10 H0 ADS	JD5	
W1	90x35-MGP10 H0 ADS	JD5	
W2	90x35-MGP10 H0 ADS	JD5	
W3	90x35-MGP10 H0 ADS	JD5	
W4	90x35-MGP10 H0 ADS	JD5	
W5	90x35-MGP10 H0 ADS	JD5	
W6	90x35-MGP10 H0 ADS	JD5	
W7	90x35-MGP10 H0 ADS	JD5	
W8	90x35-MGP10 H0 ADS	JD5	
W9	90x35-MGP10 H0 ADS	JD5	
W10	90x35-MGP10 H0 ADS	JD5	

- 3 more members were not shown -

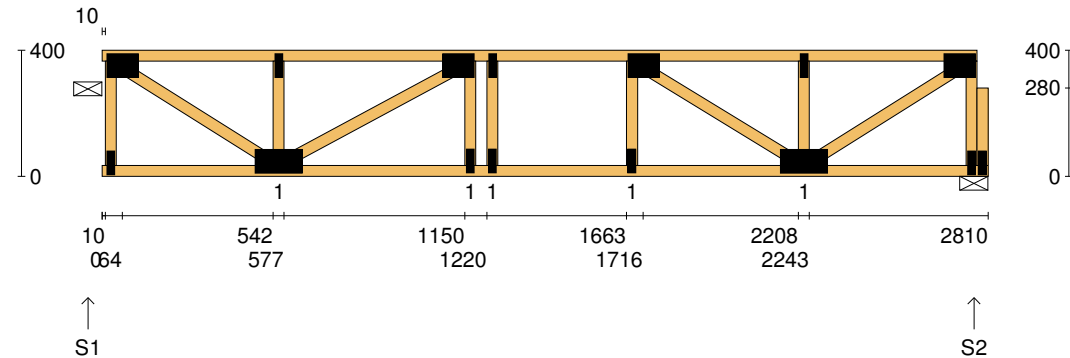
#### Vertical Reactions at Supports

	S1	S2	S3
1.35DL (kN)	0.25	0.53	0.40
1.2DL + 1.5LL (kN)	1.20	2.66	1.96

Joint	Nail Plate	Joint	Nail Plate
T1	75x100-MN	B6	75x150-MN
BL1	25x75-MN	T8	25x75-MN
B1	75x150-MN	BR1	25x75-MN
T2	25x75-MN	T9	75x100-MN
T3	75x100-MN		
B2	25x75-MN		
T4	75x100-MN		
B3	25x75-MN		
B4	75x100-MN		
T5	25x75-MN		
B5	75x100-MN		
T6	25x75-MN		
T7	75x100-MN		

Span: <b>3590</b>	Floor Material: <b>Particle (15.4 kg/m²)</b>	Application: <b>General Areas</b>	All dimensions in millimetres. This drawing should be read in conjunction with Multinail Technical sheets.	<b>016020</b> (TN-016-020)
Overhang: <b>0/0</b>	Floor Covering: <b>Std Carpet + Underlay (8 kg/m²)</b>	Live Load: <b>1.5 kPa</b>	Wall plates must be placed at supports only.	Ver: <b>Floor 1.9.4</b>
Spacing: <b>600</b>	Ceiling Material: <b>Plaster 10mm Supa Span (8.2 kg/m²)</b>	Point Load: <b>1.8 kN</b>		Date: <b>12/02/2019</b>
Quantity: <b>3</b>	Ceiling Fixing: <b>Metal direct @ 600c</b>	Design: <b>AS 1720.1-2010</b>		Page: <b>12 of 28</b>

Client: <b>DEDICATED DEVELOPMENT PTY LTD</b>	<b>Trusstech SA Pty Ltd</b> 16 High St., Dry Creek, SA 5094	Job No: <b>TT02397</b>
Site: <b>638 BURBRIDGE RD</b> <b>WEST BEACH SA 5024 AUS</b>	Joist Name: FJ11 Type: SJ 400	Weight: <b>17.77 kg</b>
Ref: <b>DWELLING 1</b>	Joists: FJ26, FJ27, FJ28, FJ34	Total Weight: <b>71.07 kg</b>
		Laminations: <b>1</b>



#### TIMBER / PLATES


Member	Size	Plating	Restraint
BC1	90x35-MGP10 H0 ADS	JD5	600
TC1	90x35-MGP10 H0 ADS	JD5	300
LEW1	90x35-MGP10 H0 ADS	JD5	
W1	90x35-MGP10 H0 ADS	JD5	
W2	90x35-MGP10 H0 ADS	JD5	
W3	90x35-MGP10 H0 ADS	JD5	
W4	90x35-MGP10 H0 ADS	JD5	
W5	90x35-MGP10 H0 ADS	JD5	
W6	90x35-MGP10 H0 ADS	JD5	
W7	90x35-MGP10 H0 ADS	JD5	
W8	90x35-MGP10 H0 ADS	JD5	
W9	90x35-MGP10 H0 ADS	JD5	
REW1	90x35-MGP10 H0 ADS	JD5	

- 1 more member was not shown -

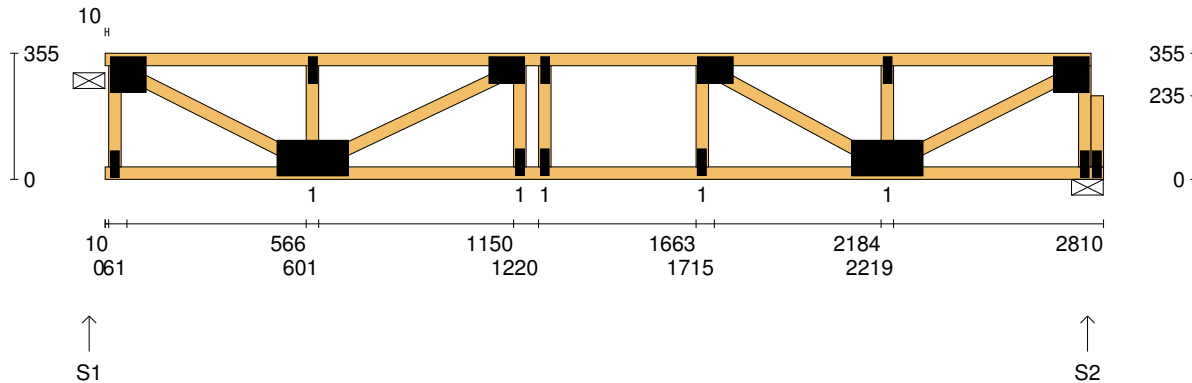
#### Vertical Reactions at Supports

	S1	S2
1.35DL (kN)	0.46	0.46
1.2DL + 1.5LL (kN)	2.25	2.25

Joint	Nail Plate	Joint	Nail Plate
T1	75x100-MN	T7	75x100-MN
BL1	25x75-MN	BR1-1	25x75-MN
B1	75x150-MN		
T2	25x75-MN		
T3	75x100-MN		
B2	25x75-MN		
T4	25x75-MN		
B3	25x75-MN		
T5	75x100-MN		
B4	25x75-MN		
B5	75x150-MN		
T6	25x75-MN		
BR1	25x75-MN		

Span: <b>2810</b>	Floor Material: <b>Particle (15.4 kg/m²)</b>	Application: <b>General Areas</b>	All dimensions in millimetres. This drawing should be read in conjunction with Multinail Technical sheets.	<b>016020</b> (TN-016-020)
Overhang: <b>0/0</b>	Floor Covering: <b>Std Carpet + Underlay (8 kg/m²)</b>	Live Load: <b>1.5 kPa</b>	Wall plates must be placed at supports only.	Ver: <b>Floor 1.9.4</b>
Spacing: <b>600</b>	Ceiling Material: <b>Plaster 10mm Supa Span (8.2 kg/m²)</b>	Point Load: <b>1.8 kN</b>		Date: <b>12/02/2019</b>
Quantity: <b>4</b>	Ceiling Fixing: <b>Metal direct @ 600c</b>	Design: <b>AS 1720.1-2010</b>		Page: <b>13 of 28</b>

Client: <b>DEDICATED DEVELOPMENT PTY LTD</b>	<b>Trusstech SA Pty Ltd</b> 16 High St., Dry Creek, SA 5094	Job No: <b>TT02397</b>
Site: <b>638 BURBRIDGE RD</b> <b>WEST BEACH SA 5024 AUS</b>		Weight: <b>17.42 kg</b>
Ref: <b>DWELLING 1</b>	Joist Name: FJ12 Type: SJ 355 Joists: FJ29, FJ30, FJ31, FJ32, FJ33, FJ37, FJ38	Total Weight: <b>121.96 kg</b>
		Laminations: <b>1</b>



#### TIMBER / PLATES


Member	Size	Plating	Restraint
BC1	90x35-MGP10 H0 ADS	JD5	600
TC1	90x35-MGP10 H0 ADS	JD5	300
LEW1	90x35-MGP10 H0 ADS	JD5	
W1	90x35-MGP10 H0 ADS	JD5	
W2	90x35-MGP10 H0 ADS	JD5	
W3	90x35-MGP10 H0 ADS	JD5	
W4	90x35-MGP10 H0 ADS	JD5	
W5	90x35-MGP10 H0 ADS	JD5	
W6	90x35-MGP10 H0 ADS	JD5	
W7	90x35-MGP10 H0 ADS	JD5	
W8	90x35-MGP10 H0 ADS	JD5	
W9	90x35-MGP10 H0 ADS	JD5	
REW1	90x35-MGP10 H0 ADS	JD5	

- 1 more member was not shown -

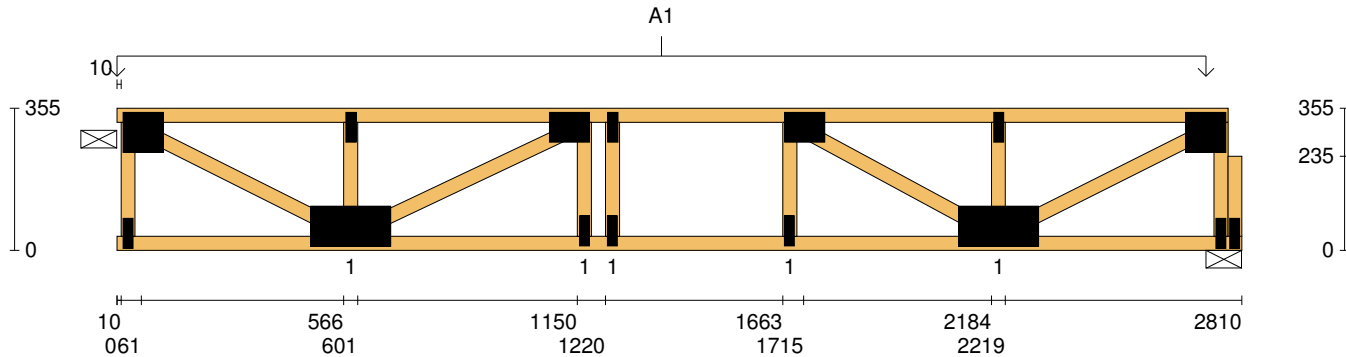
#### Vertical Reactions at Supports

	S1	S2
1.35DL (kN)	0.79	0.78
1.2DL + 1.5LL (kN)	2.81	2.79

Joint	Nail Plate	Joint	Nail Plate
T1	100x100-MN	T7	100x100-MN
BL1	25x75-MN	BR1-1	25x75-MN
B1	100x200-MN		
T2	25x75-MN		
T3	75x100-MN		
B2	25x75-MN		
T4	25x75-MN		
B3	25x75-MN		
T5	75x100-MN		
B4	25x75-MN		
B5	100x200-MN		
T6	25x75-MN		
BR1	25x75-MN		

Span: <b>2810</b>	Floor Material: <b>Particle (15.4 kg/m²)</b>	Application: <b>General Areas</b>	All dimensions in millimetres. This drawing should be read in conjunction with Multinail Technical sheets. Wall plates must be placed at supports only.	<b>016020</b> (TN-016-020)
Overhang: <b>0/0</b>	Floor Covering: <b>Std Carpet + Underlay (8 kg/m²)</b>	Live Load: <b>1.5 kPa</b>		Ver: <b>Floor 1.9.4</b>
Spacing: <b>600</b>	Ceiling Material: <b>Plaster 10mm Supa Span (8.2 kg/m²)</b>	Point Load: <b>1.8 kN</b>		Date: <b>12/02/2019</b>
Quantity: <b>7</b>	Ceiling Fixing: <b>Metal direct @ 600c</b>	Design: <b>AS 1720.1-2010</b>		Page: <b>14 of 28</b>

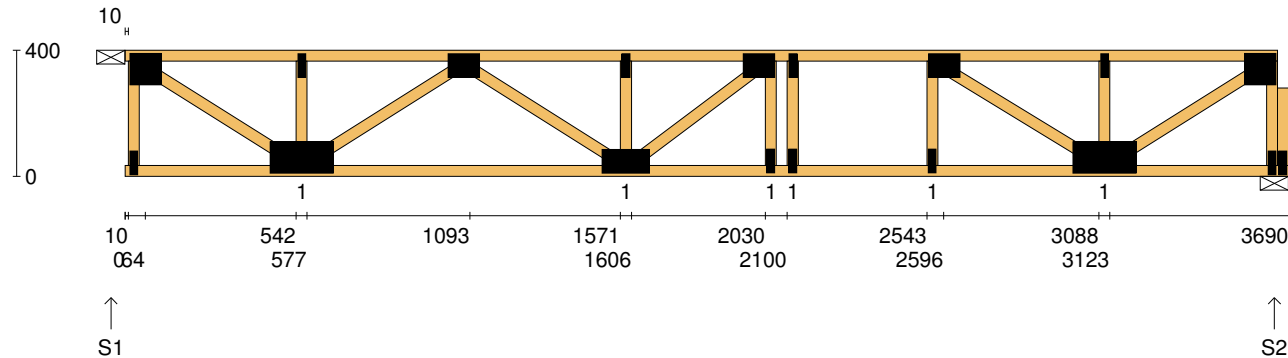
Client: <b>DEDICATED DEVELOPMENT PTY LTD</b>	<b>Trusstech SA Pty Ltd</b> 16 High St., Dry Creek, SA 5094	Job No: <b>TT02397</b>
Site: <b>638 BURBRIDGE RD</b> <b>WEST BEACH SA 5024 AUS</b>		Weight: <b>17.42 kg</b>
Ref: <b>DWELLING 1</b>	Joist Name: FJ12 Type: SJ 355 Joists: FJ29, FJ30, FJ31, FJ32, FJ33, FJ37, FJ38	Total Weight: <b>121.96 kg</b>
		Laminations: <b>1</b>



<b>User Def. Load</b>		A1 165.33 kg/m <sup>2</sup> WET AREA			
<b>Applied Load</b>		DL (kN) LL (kN) WL Up (kN) WL Dn (kN)			
Span:	2810	Floor Material:	Particle (15.4 kg/m <sup>2</sup> )	Application:	General Areas
Overhang:	0/0	Floor Covering:	Std Carpet + Underlay (8 kg/m <sup>2</sup> )	Live Load:	1.5 kPa
Spacing:	600	Ceiling Material:	Plaster 10mm Supa Span (8.2 kg/m <sup>2</sup> )	Point Load:	1.8 kN
Quantity:	7	Ceiling Fixing:	Metal direct @ 600c	Design:	AS 1720.1-2010
All dimensions in millimetres. This drawing should be read in conjunction with Multinail Technical sheets. Wall plates must be placed at supports only.					
					<b>016020</b> (TN-016-020)
					Ver: <b>Floor 1.9.4</b>
					Date: <b>12/02/2019</b>
					Page: <b>15 of 28</b>



Client: <b>DEDICATED DEVELOPMENT PTY LTD</b>	<b>Trusstech SA Pty Ltd</b> 16 High St., Dry Creek, SA 5094	Job No: <b>TT02397</b>
Site: <b>638 BURBRIDGE RD</b> <b>WEST BEACH SA 5024 AUS</b>	Joist Name: FJ13 Type: SJ 400	Weight: <b>23.36 kg</b>
Ref: <b>DWELLING 1</b>	Joists: FJ35, FJ36	Total Weight: <b>46.73 kg</b>
		Laminations: <b>1</b>



#### TIMBER / PLATES


Member	Size	Plating	Restraint
BC1	90x35-MGP10 H0 ADS	JD5	600
TC1	90x35-MGP10 H0 ADS	JD5	300
LEW1	90x35-MGP10 H0 ADS	JD5	
W1	90x35-MGP10 H0 ADS	JD5	
W2	90x35-MGP10 H0 ADS	JD5	
W3	90x35-MGP10 H0 ADS	JD5	
W4	90x35-MGP10 H0 ADS	JD5	
W5	90x35-MGP10 H0 ADS	JD5	
W6	90x35-MGP10 H0 ADS	JD5	
W7	90x35-MGP10 H0 ADS	JD5	
W8	90x35-MGP10 H0 ADS	JD5	
W9	90x35-MGP10 H0 ADS	JD5	
W10	90x35-MGP10 H0 ADS	JD5	

- 4 more members were not shown -

#### Vertical Reactions at Supports

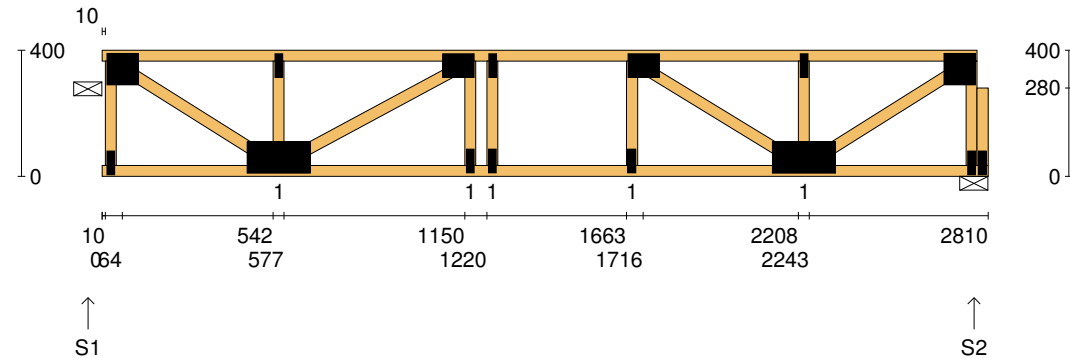
	S1	S2
1.35DL (kN)	0.60	0.61
1.2DL + 1.5LL (kN)	2.97	2.98

Joint	Nail Plate	Joint	Nail Plate
T1	100x100-MN	B6	100x200-MN
BL1	25x75-MN	T8	25x75-MN
B1	100x200-MN	BR1	25x75-MN
T2	25x75-MN	T9	100x100-MN
T3	75x100-MN	BR1-1	25x75-MN
B2	75x150-MN		
T4	25x75-MN		
T5	75x100-MN		
B3	25x75-MN		
T6	25x75-MN		
B4	25x75-MN		
T7	75x100-MN		
B5	25x75-MN		

Span: <b>3690</b>	Floor Material: <b>Particle (15.4 kg/m²)</b>	Application: <b>General Areas</b>	All dimensions in millimetres. This drawing should be read in conjunction with Multinail Technical sheets.	<b>016020</b> (TN-016-020)
Overhang: <b>0/0</b>	Floor Covering: <b>Std Carpet + Underlay (8 kg/m²)</b>	Live Load: <b>1.5 kPa</b>	Wall plates must be placed at supports only.	Ver: <b>Floor 1.9.4</b>
Spacing: <b>600</b>	Ceiling Material: <b>Plaster 10mm Supa Span (8.2 kg/m²)</b>	Point Load: <b>1.8 kN</b>		Date: <b>12/02/2019</b>
Quantity: <b>2</b>	Ceiling Fixing: <b>Metal direct @ 600c</b>	Design: <b>AS 1720.1-2010</b>		Page: <b>16 of 28</b>



Client: <b>DEDICATED DEVELOPMENT PTY LTD</b>	<b>Trusstech SA Pty Ltd</b> 16 High St., Dry Creek, SA 5094	Job No: <b>TT02397</b>
Site: <b>638 BURBRIDGE RD</b> <b>WEST BEACH SA 5024 AUS</b>		Weight: <b>18.12 kg</b>
Ref: <b>DWELLING 1</b>	Joist Name: FJ14 Type: SJ 400 Joists: FJ39	Total Weight: <b>18.12 kg</b>
		Laminations: <b>1</b>



#### TIMBER / PLATES


Member	Size	Plating	Restraint
BC1	90x35-MGP10 H0 ADS	JD5	600
TC1	90x35-MGP10 H0 ADS	JD5	300
LEW1	90x35-MGP10 H0 ADS	JD5	
W1	90x35-MGP10 H0 ADS	JD5	
W2	90x35-MGP10 H0 ADS	JD5	
W3	90x35-MGP10 H0 ADS	JD5	
W4	90x35-MGP10 H0 ADS	JD5	
W5	90x35-MGP10 H0 ADS	JD5	
W6	90x35-MGP10 H0 ADS	JD5	
W7	90x35-MGP10 H0 ADS	JD5	
W8	90x35-MGP10 H0 ADS	JD5	
W9	90x35-MGP10 H0 ADS	JD5	
REW1	90x35-MGP10 H0 ADS	JD5	

- 1 more member was not shown -

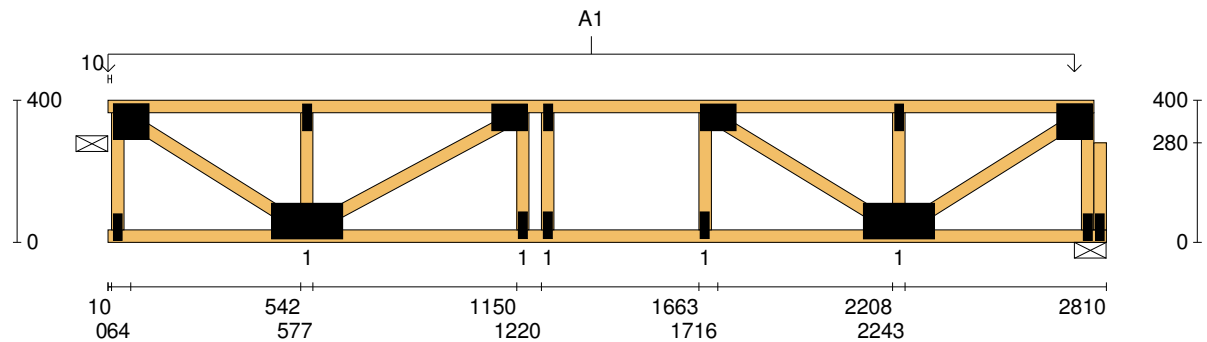
#### Vertical Reactions at Supports


	S1	S2
1.35DL (kN)	0.79	0.79
1.2DL + 1.5LL (kN)	2.81	2.80

Joint	Nail Plate	Joint	Nail Plate
T1	100x100-MN	T7	100x100-MN
BL1	25x75-MN	BR1-1	25x75-MN
B1	100x200-MN		
T2	25x75-MN		
T3	75x100-MN		
B2	25x75-MN		
T4	25x75-MN		
B3	25x75-MN		
T5	75x100-MN		
B4	25x75-MN		
B5	100x200-MN		
T6	25x75-MN		
BR1	25x75-MN		

Span: <b>2810</b>	Floor Material: <b>Particle (15.4 kg/m²)</b>	Application: <b>General Areas</b>	All dimensions in millimetres. This drawing should be read in conjunction with Multinail Technical sheets. Wall plates must be placed at supports only.	<b>016020</b> (TN-016-020)
Overhang: <b>0/0</b>	Floor Covering: <b>Std Carpet + Underlay (8 kg/m²)</b>	Live Load: <b>1.5 kPa</b>		Ver: <b>Floor 1.9.4</b>
Spacing: <b>600</b>	Ceiling Material: <b>Plaster 10mm Supa Span (8.2 kg/m²)</b>	Point Load: <b>1.8 kN</b>		Date: <b>12/02/2019</b>
Quantity: <b>1</b>	Ceiling Fixing: <b>Metal direct @ 600c</b>	Design: <b>AS 1720.1-2010</b>		Page: <b>17 of 28</b>

Client: <b>DEDICATED DEVELOPMENT PTY LTD</b>	<b>Trusstech SA Pty Ltd</b> 16 High St., Dry Creek, SA 5094	Job No: <b>TT02397</b>
Site: <b>638 BURBRIDGE RD</b> <b>WEST BEACH SA 5024 AUS</b>		Weight: <b>18.12 kg</b>
Ref: <b>DWELLING 1</b>	Joist Name: FJ14 Type: SJ 400 Joists: FJ39	Total Weight: <b>18.12 kg</b>
		Laminations: <b>1</b>



<b>User Def. Load</b>		A1 165.33 kg/m <sup>2</sup> WET AREA			
<b>Applied Load</b>		DL (kN) LL (kN) WL Up (kN) WL Dn (kN)			
Span:	2810	Floor Material:	Particle (15.4 kg/m <sup>2</sup> )	Application:	General Areas
Overhang:	0/0	Floor Covering:	Std Carpet + Underlay (8 kg/m <sup>2</sup> )	Live Load:	1.5 kPa
Spacing:	600	Ceiling Material:	Plaster 10mm Supa Span (8.2 kg/m <sup>2</sup> )	Point Load:	1.8 kN
Quantity:	1	Ceiling Fixing:	Metal direct @ 600c	Design:	AS 1720.1-2010
All dimensions in millimetres. This drawing should be read in conjunction with Multinail Technical sheets. Wall plates must be placed at supports only.					
					

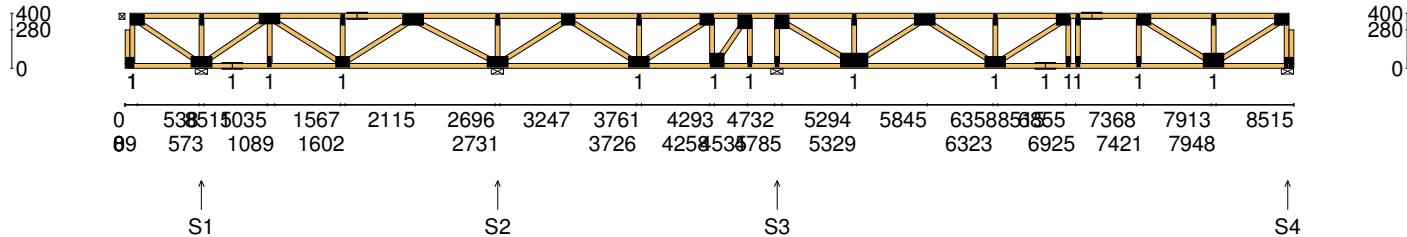
**016020**  
(TN-016-020)

Ver: **Floor 1.9.4**

Date: **12/02/2019**

Page: **18 of 28**

Client: <b>DEDICATED DEVELOPMENT PTY LTD</b>	<b>Trusstech SA Pty Ltd</b> 16 High St., Dry Creek, SA 5094	Job No: <b>TT02397</b>
Site: <b>638 BURBRIDGE RD</b> <b>WEST BEACH SA 5024 AUS</b>		Weight: <b>53.88 kg</b>
Ref: <b>DWELLING 1</b>	Joist Name: FJ15 Type: SJ 400 Joists: FJ40	Total Weight: <b>53.88 kg</b>
		Laminations: <b>1</b>



#### TIMBER / PLATES

Member	Size	Plating	Restraint
BC1	90x35-MGP10 H0 ADS	JD5	600
LBlock1	90x35-MGP10 H0 ADS	JD5	
LEW1	90x35-MGP10 H0 ADS	JD5	
TC1	90x35-MGP10 H0 ADS	JD5	300
W1	90x35-MGP10 H0 ADS	JD5	
W2	90x35-MGP10 H0 ADS	JD5	
W3	90x35-MGP10 H0 ADS	JD5	
BC2	90x35-MGP10 H0 ADS	JD5	600
W4	90x35-MGP10 H0 ADS	JD5	
W5	90x35-MGP10 H0 ADS	JD5	
W6	90x35-MGP10 H0 ADS	JD5	
W7	90x35-MGP10 H0 ADS	JD5	
TC2	90x35-MGP10 H0 ADS	JD5	300


- 26 more members were not shown -

#### Vertical Reactions at Supports

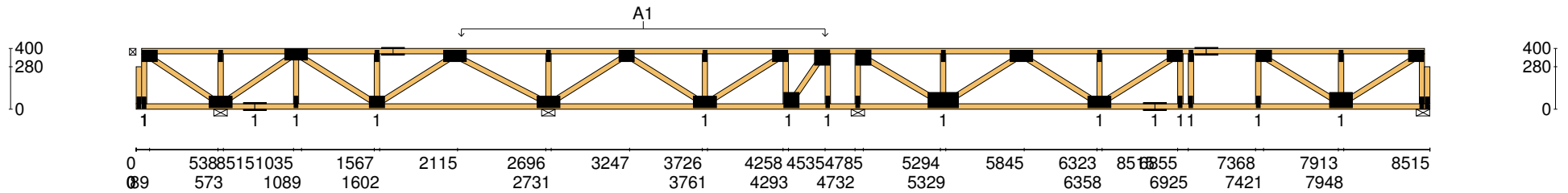
	S1	S2	S3	S4
1.35DL (kN)	0.44	0.97	1.25	0.52
1.2DL + 1.5LL (kN)	2.24	3.58	5.85	2.52

Joint	Nail Plate	Joint	Nail Plate
BL1-1	25x75-MN	T7	25x75-MN
T1	75x100-MN	T8	75x100-MN
BL1	25x75-MN	B6	75x150-MN
B1	75x150-MN	T9	25x75-MN
T2	25x75-MN	T10	75x100-MN
B2	75x150-MN	B7	100x100-MN
T3	75x150-MN	T11	100x100-MN
B3	25x75-MN	B8	25x75-MN
B4	75x100-MN	T12	100x100-MN
T4	25x75-MN	B9	25x75-MN
T5	75x150-MN	B10	100x200-MN
T6	75x150-MN	T13	25x75-MN
B5	75x150-MN	BR1-1	25x75-MN

- 15 more nail plates were not shown -

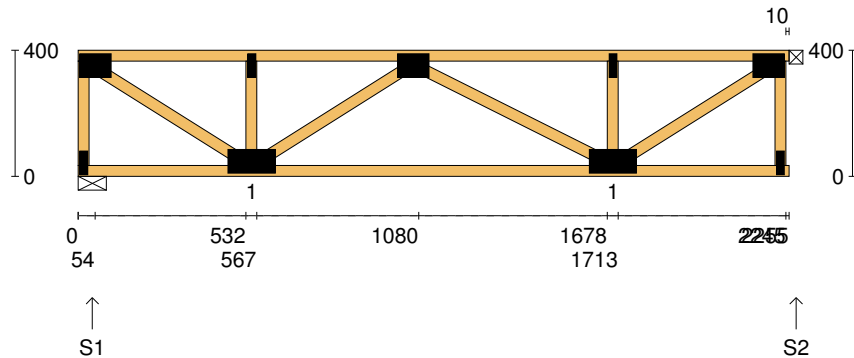
Span: <b>8515</b>	Floor Material: <b>Particle (15.4 kg/m²)</b>	Application: <b>General Areas</b>	All dimensions in millimetres. This drawing should be read in conjunction with Multinail Technical sheets. Wall plates must be placed at supports only.	<b>016020</b> (TN-016-020)
Overhang: <b>0/0</b>	Floor Covering: <b>Std Carpet + Underlay (8 kg/m²)</b>	Live Load: <b>1.5 kPa</b>		Ver: <b>Floor 1.9.4</b>
Spacing: <b>600</b>	Ceiling Material: <b>Plaster 10mm Supa Span (8.2 kg/m²)</b>	Point Load: <b>1.8 kN</b>		Date: <b>12/02/2019</b>
Quantity: <b>1</b>	Ceiling Fixing: <b>Metal direct @ 600c</b>	Design: <b>AS 1720.1-2010</b>		Page: <b>19 of 28</b>

Client: <b>DEDICATED DEVELOPMENT PTY LTD</b>	<b>Trusstech SA Pty Ltd</b> 16 High St., Dry Creek, SA 5094  Joist Name: FJ15 Type: SJ 400 Joists: FJ40	Job No: <b>TT02397</b>
Site: <b>638 BURBRIDGE RD</b> <b>WEST BEACH SA 5024 AUS</b>		Weight: <b>53.88 kg</b>
Ref: <b>DWELLING 1</b>		Total Weight: <b>53.88 kg</b> Laminations: <b>1</b>



<b>User Def. Load</b>		A1 43.50 kg/m <sup>2</sup> WET AREA	
<b>Applied Load</b>			
DL	(kN)		
LL	(kN)		
WL Up	(kN)		
WL Dn	(kN)		
Span:	8515	Floor Material:	Particle (15.4 kg/m <sup>2</sup> )
Overhang:	0/0	Floor Covering:	Std Carpet + Underlay (8 kg/m <sup>2</sup> )
Spacing:	600	Ceiling Material:	Plaster 10mm Supa Span (8.2 kg/m <sup>2</sup> )
Quantity:	1	Ceiling Fixing:	Metal direct @ 600c
		Application:	General Areas
		Live Load:	1.5 kPa
		Point Load:	1.8 kN
		Design:	AS 1720.1-2010
All dimensions in millimetres. This drawing should be read in conjunction with Multinail Technical sheets. Wall plates must be placed at supports only.			
		<b>016020</b> (TN-016-020)	
		Ver:	Floor 1.9.4
		Date:	12/02/2019
		Page:	20 of 28

Client: <b>DEDICATED DEVELOPMENT PTY LTD</b>	<b>Trusstech SA Pty Ltd</b> 16 High St., Dry Creek, SA 5094	Job No: <b>TT02397</b>
Site: <b>638 BURBRIDGE RD</b> <b>WEST BEACH SA 5024 AUS</b>		Weight: <b>13.86 kg</b>
Ref: <b>DWELLING 1</b>	Joist Name: FJ16 Type: SJ 400 Joists: FJ42	Total Weight: <b>13.86 kg</b>
		Laminations: <b>1</b>



#### TIMBER / PLATES


Member	Size	Plating	Restraint
BC1	90x35-MGP10 H0 ADS	JD5	600
LEW1	90x35-MGP10 H0 ADS	JD5	
TC1	90x35-MGP10 H0 ADS	JD5	300
W1	90x35-MGP10 H0 ADS	JD5	
W2	90x35-MGP10 H0 ADS	JD5	
W3	90x35-MGP10 H0 ADS	JD5	
W4	90x35-MGP10 H0 ADS	JD5	
W5	90x35-MGP10 H0 ADS	JD5	
W6	90x35-MGP10 H0 ADS	JD5	
REW1	90x35-MGP10 H0 ADS	JD5	

#### Vertical Reactions at Supports

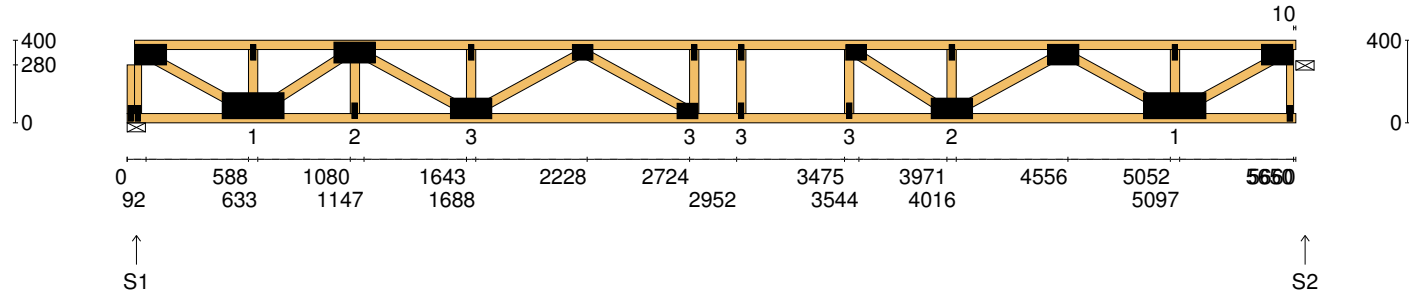
	S1	S2
1.35DL (kN)	0.37	0.37
1.2DL + 1.5LL (kN)	1.82	1.82

#### Joint Nail Plate

T1	75x100-MN
BL1	25x75-MN
B1	75x150-MN
T2	25x75-MN
T3	75x100-MN
B2	75x150-MN
T4	25x75-MN
BR1	25x75-MN
T5	75x100-MN

Span: <b>2255</b>	Floor Material: <b>Particle (15.4 kg/m²)</b>	Application: <b>General Areas</b>	All dimensions in millimetres. This drawing should be read in conjunction with Multinail Technical sheets. Wall plates must be placed at supports only.	<b>016020</b> (TN-016-020)
Overhang: <b>0/0</b>	Floor Covering: <b>Std Carpet + Underlay (8 kg/m²)</b>	Live Load: <b>1.5 kPa</b>		Ver: <b>Floor 1.9.4</b>
Spacing: <b>600</b>	Ceiling Material: <b>Plaster 10mm Supa Span (8.2 kg/m²)</b>	Point Load: <b>1.8 kN</b>		Date: <b>12/02/2019</b>
Quantity: <b>1</b>	Ceiling Fixing: <b>Metal direct @ 600c</b>	Design: <b>AS 1720.1-2010</b>		Page: <b>21 of 28</b>

Client: <b>DEDICATED DEVELOPMENT PTY LTD</b>	<b>Trusstech SA Pty Ltd</b> 16 High St., Dry Creek, SA 5094	Job No: <b>TT02397</b>
Site: <b>638 BURBRIDGE RD</b> <b>WEST BEACH SA 5024 AUS</b>		Weight: <b>43.22 kg</b>
Ref: <b>DWELLING 1</b>	Joist Name: FJ17 Type: SJ 400 Joists: FJ52	Total Weight: <b>43.22 kg</b>
		Laminations: <b>1</b>



#### TIMBER / PLATES


Member	Size	Plating	Restraint
BC1	90x45-MGP10 H0 ADS	JD5	600
LBlock1	90x35-MGP10 H0 ADS	JD5	
LEW1	90x35-MGP10 H0 ADS	JD5	
TC1	90x45-MGP10 H0 ADS	JD5	300
W1	90x45-MGP10 H0 ADS	JD5	
W2	90x45-MGP10 H0 ADS	JD5	
W3	90x45-MGP10 H0 ADS	JD5	
W4	90x45-MGP10 H0 ADS	JD5	
W5	90x45-MGP10 H0 ADS	JD5	
W6	90x45-MGP10 H0 ADS	JD5	
W7	90x45-MGP10 H0 ADS	JD5	
W8	90x45-MGP10 H0 ADS	JD5	
W9	90x45-MGP10 H0 ADS	JD5	

- 9 more members were not shown -

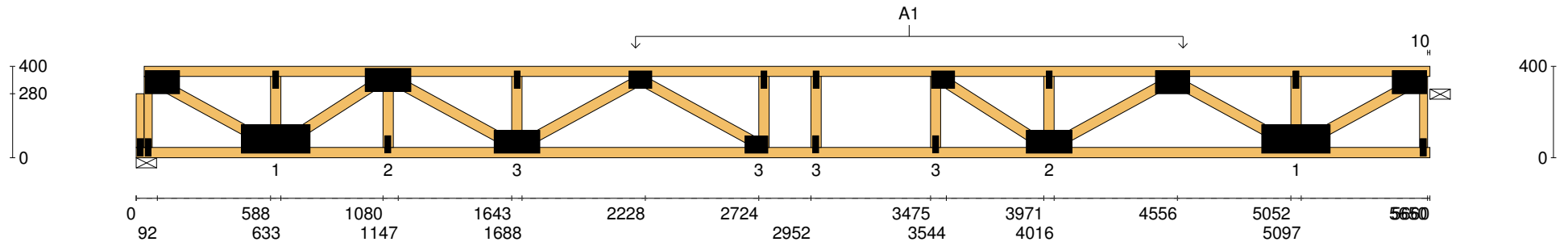
#### Vertical Reactions at Supports


	S1	S2
1.35DL (kN)	1.14	1.20
1.2DL + 1.5LL (kN)	4.78	4.84

Joint	Nail Plate	Joint	Nail Plate
BL1-1	25x75-MN	B5	25x75-MN
T1	100x150-MN	T8	75x100-MN
BL1	25x75-MN	B6	25x75-MN
B1	125x300-MN	B7	100x200-MN
T2	25x75-MN	T9	25x75-MN
T3	100x200-MN	T10	100x150-MN
B2	25x75-MN	B8	125x300-MN
B3	100x200-MN	T11	25x75-MN
T4	25x75-MN	BR1	25x75-MN
T5	75x100-MN	T12	100x150-MN
B4	75x100-MN		
T6	25x75-MN		
T7	25x75-MN		

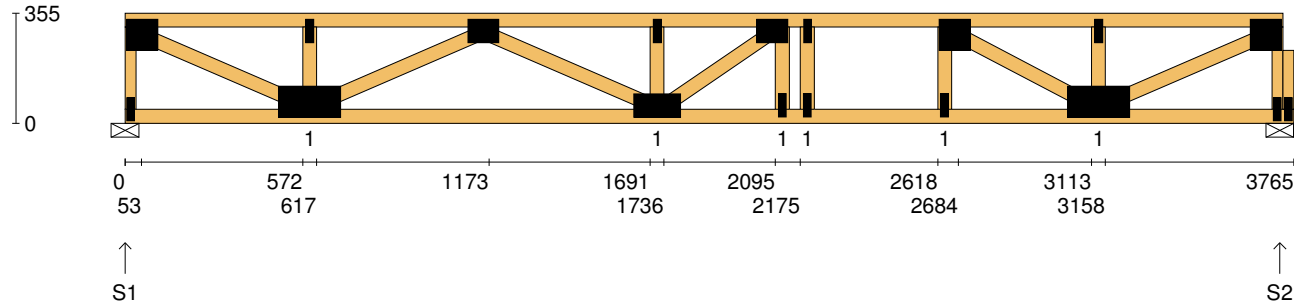
Span: <b>5660</b>	Floor Material: <b>Particle (15.4 kg/m²)</b>	Application: <b>General Areas</b>	All dimensions in millimetres. This drawing should be read in conjunction with Multinail Technical sheets. Wall plates must be placed at supports only.	<b>016020</b> (TN-016-020)
Overhang: <b>0/0</b>	Floor Covering: <b>Std Carpet + Underlay (8 kg/m²)</b>	Live Load: <b>1.5 kPa</b>		Ver: <b>Floor 1.9.4</b>
Spacing: <b>600</b>	Ceiling Material: <b>Plaster 10mm Supa Span (8.2 kg/m²)</b>	Point Load: <b>1.8 kN</b>		Date: <b>12/02/2019</b>
Quantity: <b>1</b>	Ceiling Fixing: <b>Metal direct @ 600c</b>	Design: <b>AS 1720.1-2010</b>		Page: <b>22 of 28</b>

Client: <b>DEDICATED DEVELOPMENT PTY LTD</b>	<b>Trusstech SA Pty Ltd</b> 16 High St., Dry Creek, SA 5094  Joist Name: FJ17    Type: SJ 400 Joists: FJ52	Job No: <b>TT02397</b>
Site: <b>638 BURBRIDGE RD</b> <b>WEST BEACH SA 5024 AUS</b>		Weight: <b>43.22 kg</b>
Ref: <b>DWELLING 1</b>		Total Weight: <b>43.22 kg</b> Laminations: <b>1</b>



<b>User Def. Load</b>		A1 43.50 kg/m² WET AREA	
<b>Applied Load</b> DL (kN) LL (kN) WL Up (kN) WL Dn (kN)			
Span:	5660	Floor Material:	Particle (15.4 kg/m²)
Overhang:	0/0	Floor Covering:	Std Carpet + Underlay (8 kg/m²)
Spacing:	600	Ceiling Material:	Plaster 10mm Supa Span (8.2 kg/m²)
Quantity:	1	Ceiling Fixing:	Metal direct @ 600c
		Application:	General Areas
		Live Load:	1.5 kPa
		Point Load:	1.8 kN
		Design:	AS 1720.1-2010
		All dimensions in millimetres. This drawing should be read in conjunction with Multinail Technical sheets. Wall plates must be placed at supports only.	
			
		016020 (TN-016-020)	
		Ver:	Floor 1.9.4
		Date:	12/02/2019
		Page:	23 of 28

Client: <b>DEDICATED DEVELOPMENT PTY LTD</b>	<b>Trusstech SA Pty Ltd</b> 16 High St., Dry Creek, SA 5094  Joist Name: FJ18    Type: SJ 355 Joists: FJ53, FJ54, FJ55	Job No: <b>TT02397</b>
Site: <b>638 BURBRIDGE RD</b> <b>WEST BEACH SA 5024 AUS</b>		Weight: <b>27.94 kg</b>
Ref: <b>DWELLING 1</b>		Total Weight: <b>83.81 kg</b> Laminations: <b>1</b>



#### TIMBER / PLATES


Member	Size	Plating	Restraint
BC1	90x45-MGP10 H0 ADS	JD5	600
LEW1	90x35-MGP10 H0 ADS	JD5	
TC1	90x45-MGP10 H0 ADS	JD5	300
W1	90x45-MGP10 H0 ADS	JD5	
W2	90x45-MGP10 H0 ADS	JD5	
W3	90x45-MGP10 H0 ADS	JD5	
W4	90x45-MGP10 H0 ADS	JD5	
W5	90x45-MGP10 H0 ADS	JD5	
W6	90x45-MGP10 H0 ADS	JD5	
W7	90x45-MGP10 H0 ADS	JD5	
W8	90x45-MGP10 H0 ADS	JD5	
W9	90x45-MGP10 H0 ADS	JD5	
W10	90x45-MGP10 H0 ADS	JD5	

- 4 more members were not shown -

#### Vertical Reactions at Supports

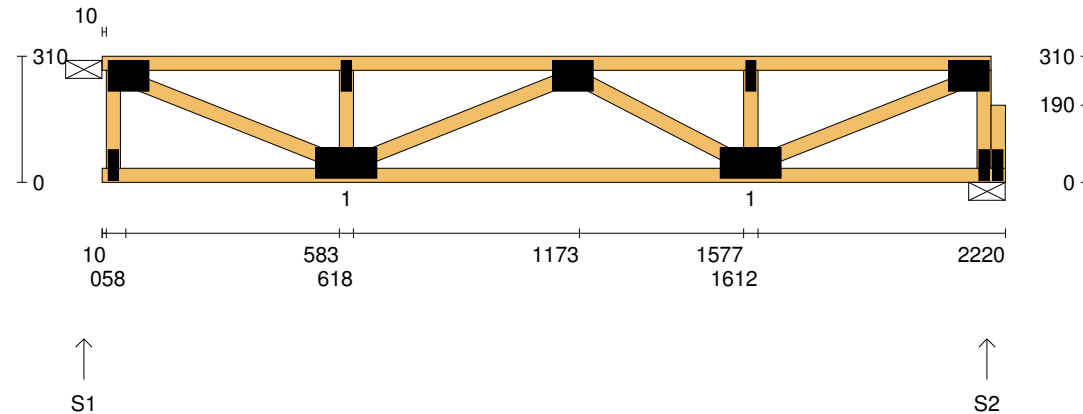
	S1	S2
1.35DL (kN)	0.65	0.65
1.2DL + 1.5LL (kN)	3.07	3.07

Joint	Nail Plate	Joint	Nail Plate
T1	100x100-MN	B6	100x200-MN
BL1	25x75-MN	T8	25x75-MN
B1	100x200-MN	BR1	25x75-MN
T2	25x75-MN	T9	100x100-MN
T3	75x100-MN	BR1-1	25x75-MN
B2	75x150-MN		
T4	25x75-MN		
T5	75x100-MN		
B3	25x75-MN		
T6	25x75-MN		
B4	25x75-MN		
T7	100x100-MN		
B5	25x75-MN		

Span: <b>3765</b>	Floor Material: <b>Particle (15.4 kg/m²)</b>	Application: <b>General Areas</b>	All dimensions in millimetres. This drawing should be read in conjunction with Multinail Technical sheets. Wall plates must be placed at supports only.	<b>016020</b> (TN-016-020)
Overhang: <b>0/0</b>	Floor Covering: <b>Std Carpet + Underlay (8 kg/m²)</b>	Live Load: <b>1.5 kPa</b>		Ver: <b>Floor 1.9.4</b>
Spacing: <b>600</b>	Ceiling Material: <b>Plaster 10mm Supa Span (8.2 kg/m²)</b>	Point Load: <b>1.8 kN</b>		Date: <b>12/02/2019</b>
Quantity: <b>3</b>	Ceiling Fixing: <b>Metal direct @ 600c</b>	Design: <b>AS 1720.1-2010</b>		Page: <b>24 of 28</b>



Client: <b>DEDICATED DEVELOPMENT PTY LTD</b>	<b>Trusstech SA Pty Ltd</b> 16 High St., Dry Creek, SA 5094	Job No: <b>TT02397</b>
Site: <b>638 BURBRIDGE RD</b> <b>WEST BEACH SA 5024 AUS</b>		Weight: <b>13.07 kg</b>
Ref: <b>DWELLING 1</b>	Joist Name: FJ19 Type: SJ 310 Joists: FJ43, FJ44, FJ45, FJ46, FJ47	Total Weight: <b>65.35 kg</b>
		Laminations: <b>1</b>



#### TIMBER / PLATES


Member	Size	Plating	Restraint
BC1	90x35-MGP10 H0 ADS	JD5	600
TC1	90x35-MGP10 H0 ADS	JD5	
LEW1	90x35-MGP10 H0 ADS	JD5	
W1	90x35-MGP10 H0 ADS	JD5	
W2	90x35-MGP10 H0 ADS	JD5	
W3	90x35-MGP10 H0 ADS	JD5	
W4	90x35-MGP10 H0 ADS	JD5	
W5	90x35-MGP10 H0 ADS	JD5	
W6	90x35-MGP10 H0 ADS	JD5	
REW1	90x35-MGP10 H0 ADS	JD5	
RBlock1	90x35-MGP10 H0 ADS	JD5	

#### Vertical Reactions at Supports

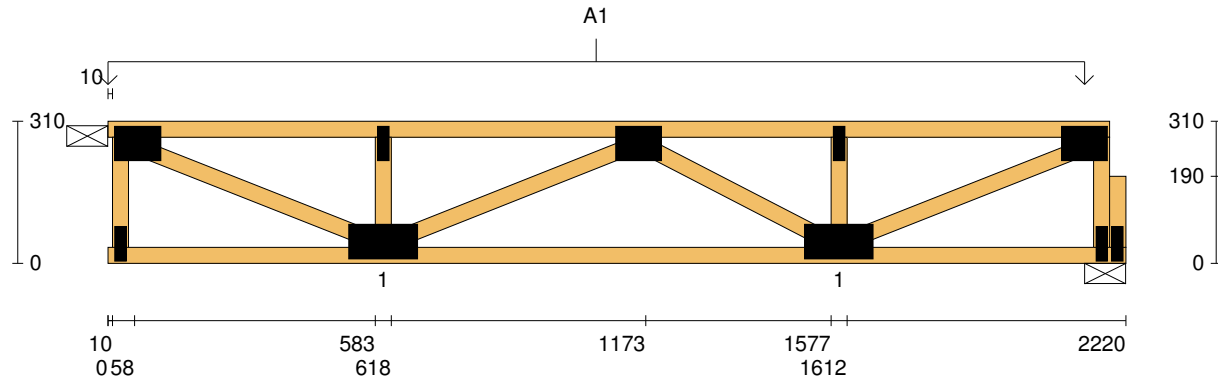
	S1	S2
1.35DL (kN)	0.41	0.41
1.2DL + 1.5LL (kN)	1.81	1.80

#### Joint Nail Plate

T1	75x100-MN
BL1	25x75-MN
B1	75x150-MN
T2	25x75-MN
T3	75x100-MN
B2	75x150-MN
T4	25x75-MN
BR1	25x75-MN
T5	75x100-MN
BR1-1	25x75-MN


Span: <b>2220</b>	Floor Material: <b>Fibre Board (23.5 kg/m²)</b>	Application: <b>General Areas</b>	All dimensions in millimetres. This drawing should be read in conjunction with Multinail Technical sheets. Wall plates must be placed at supports only.	<b>016020</b> (TN-016-020)
Overhang: <b>0/0</b>	Floor Covering: <b>Std Carpet + Underlay (8 kg/m²)</b>	Live Load: <b>1.5 kPa</b>		Ver: <b>Floor 1.9.4</b>
Spacing: <b>450</b>	Ceiling Material: <b>Plaster 10mm Supa Span (8.2 kg/m²)</b>	Point Load: <b>1.8 kN</b>		Date: <b>12/02/2019</b>
Quantity: <b>5</b>	Ceiling Fixing: <b>Metal direct @ 600c</b>	Design: <b>AS 1720.1-2010</b>		Page: <b>25 of 28</b>

Client: <b>DEDICATED DEVELOPMENT PTY LTD</b>	<b>Trusstech SA Pty Ltd</b> 16 High St., Dry Creek, SA 5094	Job No: <b>TT02397</b>
Site: <b>638 BURBRIDGE RD</b> <b>WEST BEACH SA 5024 AUS</b>		Weight: <b>13.07 kg</b>
Ref: <b>DWELLING 1</b>	Joist Name: FJ19 Type: SJ 310 Joists: FJ43, FJ44, FJ45, FJ46, FJ47	Total Weight: <b>65.35 kg</b>
		Laminations: <b>1</b>



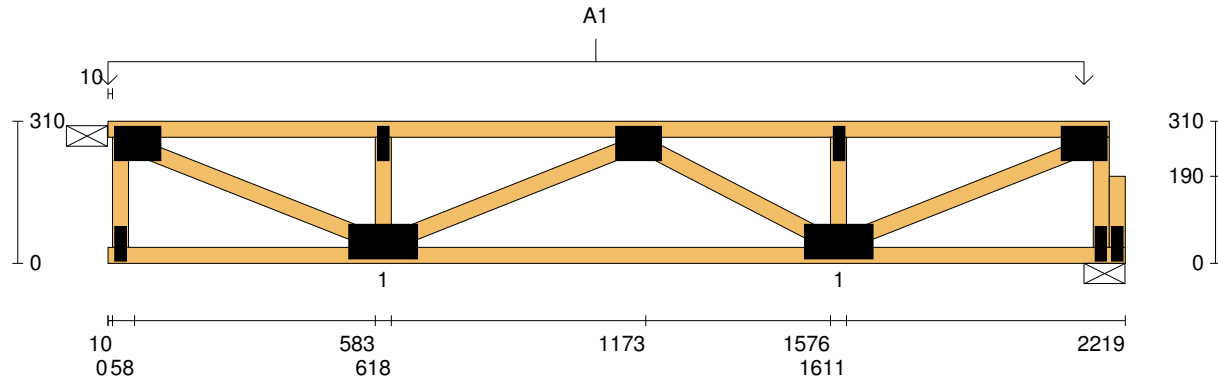
**User Def. Load** A1  
43.50 kg/m<sup>2</sup>  
2 kPa, 1.8 kN  
BALCONY

**Applied Load**  
DL (kN)  
LL (kN)  
WL Up (kN)  
WL Dn (kN)

Span: <b>2220</b>	Floor Material: <b>Fibre Board (23.5 kg/m<sup>2</sup>)</b>	Application: <b>General Areas</b>	All dimensions in millimetres. This drawing should be read in conjunction with Multinail Technical sheets. Wall plates must be placed at supports only.	<b>016020</b> (TN-016-020)
Overhang: <b>0/0</b>	Floor Covering: <b>Std Carpet + Underlay (8 kg/m<sup>2</sup>)</b>	Live Load: <b>1.5 kPa</b>		Ver: <b>Floor 1.9.4</b>
Spacing: <b>450</b>	Ceiling Material: <b>Plaster 10mm Supa Span (8.2 kg/m<sup>2</sup>)</b>	Point Load: <b>1.8 kN</b>		Date: <b>12/02/2019</b>
Quantity: <b>5</b>	Ceiling Fixing: <b>Metal direct @ 600c</b>	Design: <b>AS 1720.1-2010</b>		Page: <b>26 of 28</b>




Client: <b>DEDICATED DEVELOPMENT PTY LTD</b>	<b>Trusstech SA Pty Ltd</b> 16 High St., Dry Creek, SA 5094	Job No: <b>TT02397</b>
Site: <b>638 BURBRIDGE RD</b> <b>WEST BEACH SA 5024 AUS</b>		Weight: <b>13.07 kg</b>
Ref: <b>DWELLING 1</b>	Joist Name: FJ20 Type: SJ 310 Joists: FJ48, FJ49, FJ50, FJ51	Total Weight: <b>52.26 kg</b>
		Laminations: <b>1</b>



**User Def. Load** A1  
43.50 kg/m<sup>2</sup>  
2 kPa, 1.8 kN  
BALCONY

**Applied Load**  
DL (kN)  
LL (kN)  
WL Up (kN)  
WL Dn (kN)

Span: <b>2219</b>	Floor Material: <b>Fibre Board (23.5 kg/m<sup>2</sup>)</b>	Application: <b>General Areas</b>	All dimensions in millimetres. This drawing should be read in conjunction with Multinail Technical sheets. Wall plates must be placed at supports only.	<b>016020</b> (TN-016-020)
Overhang: <b>0/0</b>	Floor Covering: <b>Std Carpet + Underlay (8 kg/m<sup>2</sup>)</b>	Live Load: <b>1.5 kPa</b>		Ver: <b>Floor 1.9.4</b>
Spacing: <b>450</b>	Ceiling Material: <b>Plaster 10mm Supa Span (8.2 kg/m<sup>2</sup>)</b>	Point Load: <b>1.8 kN</b>		Date: <b>12/02/2019</b>
Quantity: <b>4</b>	Ceiling Fixing: <b>Metal direct @ 600c</b>	Design: <b>AS 1720.1-2010</b>		Page: <b>28 of 28</b>